



**In-Out Thermometer with Cable Free
Sensor and Clock
Model: RAR232**

User Manual

**IN-OUT THERMOMETER
WITH CABLE FREE SENSOR AND CLOCK
(MODEL: RAR232)**

USER'S MANUAL

Reset 7
Troubleshooting 7
Safety and care 8
Specifications 8
About Oregon Scientific 9
Note on compliance 9

CONTENTS

Introduction 1
Product overview 2
 Main unit 2
 Remote unit 3
Table stand and wall mounting 3
 Main unit 3
 Remote unit 3
Getting started 4
 Batteries 4
 Kinetic wave display 5
 Clock and calendar display modes 6
Set time / date / language 6
Set alarm 6
Indoor and outdoor temperature 7
 Indoor temperature 7
 outdoor temperature 7
 Maximum and minimum temperatures 7
 Clear memories 7
Low battery warning 7

INTRODUCTION

Congratulations on your purchase of the Oregon Scientific™ RAR232 Indoor and Outdoor Thermometer with 433MHz cable free sensor and calendar clock.

Inside this box you will find:

- Main unit (RAR232)
- Remote thermo sensor unit (THR268)
- User guide
- Removable table stand
- Wall mount
- 12 month warranty
- 2 UM-4 (AAA) 1.5V batteries
- 2 UM-3 (AA) 1.5V batteries

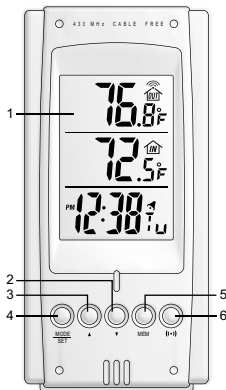
Product features include:

- Indoor and outdoor temperature display
- MIN / MAX temperature record
- Wireless sensor
- Five language calendar clock display
- Two minute crescendo alarm

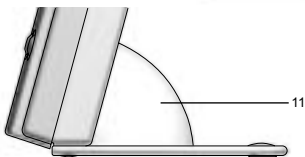
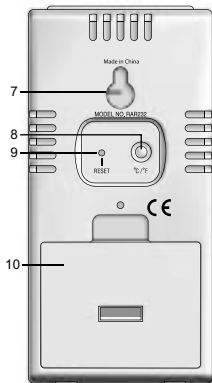
PRODUCT OVERVIEW

MAIN UNIT

FRONT VIEW



BACK VIEW



1. Three-line display

Facilitates easy reading of remote and indoors temperatures and calendar clock.

2. Down (▼) button

Decreases the value of a setting.

3. Up (▲) button

Increases the value of a setting.

4. MODE/SET button

Toggles the display modes and confirms entry while setting the values for display.

5. Memory (MEM) button

Recalls the maximum or minimum temperature of main and remote unit.

6. Alarm (⌚) button

Displays the alarm time or sets the alarm status.

7. Wall-mount recess hole

For mounting the main unit on a wall.

8. °C / °F button

Selects between degrees Centigrade (°C) and Fahrenheit (°F).

9. RESET button

Returns all settings to factory defaults.

10. Battery compartment

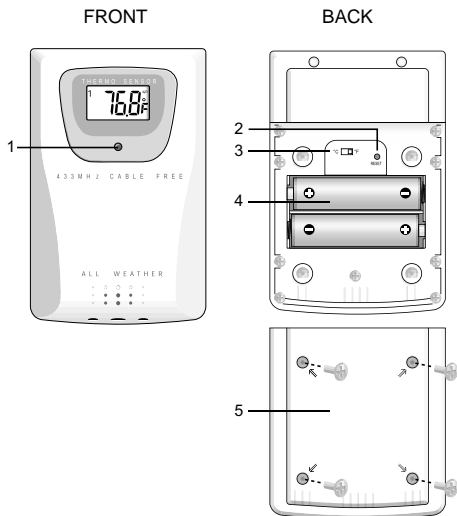
Accommodates 2 X UM-4 "AAA" size 1.5V alkaline batteries.

11. Removable table stand

For standing the main unit on a flat surface.



REMOTE UNIT



1. LED indicator

Flashes when the remote unit transmits a reading.

2. RESET button

3. °C / °F switch

Selects between degrees Centigrade (°C) and Fahrenheit (°F).

4. Battery compartment

Accommodates 2 UM-3 (AA) 1.5V batteries.

5. Battery compartment cover

TABLE STAND AND WALL MOUNT

The main and remote units can either be positioned on a flat surface or mounted on a wall.

MAIN UNIT

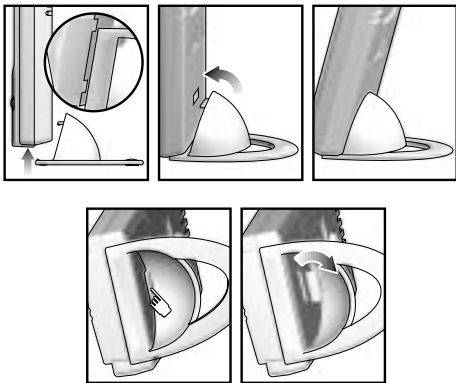


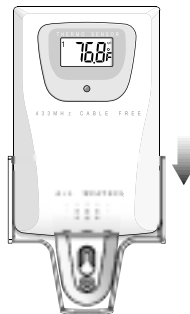
TABLE STAND

1. Once the battery cover is on, attach the stand through the battery cover's rectangular slot.

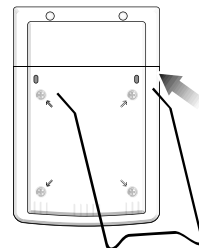
2. Ensure that the base of the stand fits into the 2 small holes at the bottom of the main unit.
3. To remove the stand from the battery cover, press your finger against the latch in the opening found at the bottom of the stand as shown in the diagram.
4. Pull the stand out in a downward motion to release.

REMOTE UNIT

(WALL MOUNT)



(TABLE STAND)



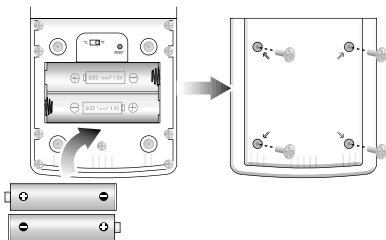


GETTING STARTED

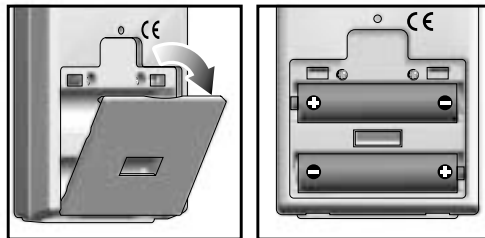
Once batteries are in place for the remote unit, temperature readings will be transmitted at 39-second intervals. The main unit will search for signals for approximately 4 minutes after the batteries have been installed.

BATTERIES

1. Remove the remote unit battery compartment cover and insert batteries.






2. Install the main unit batteries.



3. Position the main unit close to the remote unit.
4. Press **RESET** on the remote unit.
5. Press **RESET** on the main unit to begin synchronization.

KINETIC WAVE DISPLAY

The kinetic wave display shows the signal reception status of the main unit. There are three possible outcomes:

Searching for signal.	
Signal is secure.	
No signals.	

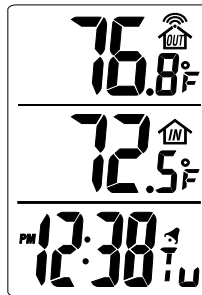
For best results:

- Place the unit away from electrical or mechanical objects.
- Place the unit out of direct sunlight and moisture.
- Do not place the remote unit more than 100 feet (30meters) from the main unit.
- Position the remote unit so that it faces the main unit.
- Minimize obstructions such as doors, walls, and furniture.

You may need to experiment with various locations to get the best reception.

NOTE Signals from other household devices, such as doorbells, home security systems and entry controls, may interfere with this product's signals and cause temporarily reception failure. This is normal and does not affect the general performance of the product. The transmission and


reception of temperature readings will resume once the interference recedes.



Upon successful reception:

- The top line will display outdoor temperature.
- The bottom line will display indoor temperature.

NOTE When the temperature falls below freezing, an alkaline battery in the outdoor unit may freeze, lowering the voltage supply and the effective range.

If no signals are received, blanks " - - - " will be displayed and the kinetic wave icon will show "  ". Press **▲** and **▼** simultaneously to force a 4 minute search. This will re-establish transmission and reception for the remote and main unit.

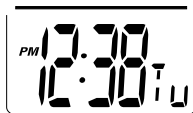


Repeat this step whenever you find that the temperature displayed on the remote sensor is not the same as the outdoor temperature display on the main unit.

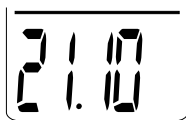
CLOCK AND CALENDAR DISPLAY MODES

The clock and calendar share the same section of the display. The calendar is displayed in a day-month format.

Press the **MODE** button to toggle between clock and calendar display modes.



Clock mode



Calendar mode

SET TIME / DATE / LANGUAGE

In this mode you can set the time, date, and display language. If there is a setting you do not wish to adjust, press **MODE/SET** to bypass it.

1. Press and hold **MODE/SET** for two seconds in clock display mode. Press **▲** or **▼** to select 12 or 24 hour format.
2. Press and hold **MODE/SET** to confirm.
3. Repeat the same procedures to set the hour, minutes, year, month, day-of-month and display language.
4. Press **MODE/SET** to exit. The display will return to the clock mode.

TIP: During setting, press and hold **▲** or **▼** to rapidly increase or decrease a value.

NOTE The date is displayed in DAY-MONTH format. For the display language, you can choose from English (E), German (D), French (F), Italian (I), or Spanish (S).

SET ALARM

To set the alarm:

1. Press **(*)** once to display the alarm time. If the alarm is disarmed, the time will be displayed as ****:**.
2. Press and hold **(*)** for two seconds, The hour digits will blink.
3. Enter the hour by pressing either **▲** or **▼**.
4. Press **(*)**. The minute digits will blink.
5. Enter the minutes by pressing either **▲** or **▼**.
6. Press **(*)** to exit.

The alarm  icon will be displayed indicating that the alarm is now armed.

TIP:

- You can also arm or disarm an alarm by pressing the **(*)** button. Press **MODE/SET** to return to clock mode.
- Press any key on the unit to stop the alarm.

INDOOR AND OUTDOOR TEMPERATURE

If no readings are received from the remote unit for more than 4 minutes, blanks, " **.- " will be displayed until further readings have been successfully searched. Check that the remote unit is sound and secure. You can wait for a little while or press ▲ and ▼ simultaneously to force an immediate search.

INDOOR TEMPERATURE

The indoor temperature is shown in the second line of the display.

OUTDOOR TEMPERATURE

The outdoor temperature is shown on the top line of the display. The kinetic wave on the outdoor temperature display shows if remote unit reception is connecting properly.

NOTE If the temperature exceeds the temperature range of the main or remote units "HHH" (above) or "LLL" (below) will display.

MAXIMUM AND MINIMUM TEMPERATURES

The maximum and minimum indoor and outdoor temperatures are automatically stored in memory. To display them:

1. Press **MEM** to display the maximum temperature.
2. Press **MEM** again to display the minimum temperature.

The respective indicators, **MAX** or **MIN**, will be displayed.

CLEAR MEMORIES

To clear the memory, press and hold **MEM** for two seconds. If you wish to set the current temperature as the min / max records, pres **MEM** again.

LOW BATTERY WARNING

When it is time to replace the batteries, the respective low battery indicator 🔋 will appear on the indoor and outdoor temperature windows.

RESET

Use this button when the unit is operating in an unfavorable way or malfunctioning. Use a blunt stylus to hold down the button. All settings will return to their default values.

TROUBLESHOOTING

Problem	Symptom	Remedy
Remote unit, "**.-" is displayed on the main unit LCD	Cannot locate remote unit	Check batteries
		Check location
Calendar	Unusual date / month	Change language
Temp	Shows "LLL" or "HHH"	Temperature is out-of-range



SAFETY AND CARE

This product is designed to give you years of service if handled properly. Observe the following guidelines:

- Never immerse the unit in water. This can cause electrical shock and damage the unit.
- Do not subject the main unit to extreme force, shock, or fluctuations in temperature or humidity.
- Do not tamper with the internal components.
- Do not mix new and old batteries or batteries of different types. Do not use rechargeable batteries with this product.
- Remove the batteries if storing this product for a long period of time.
- Do not scratch the LCD display.
- Do not make any changes or modifications to this product. Unauthorized changes may void your right to use the product.
- The technical specifications for this product and the contents of the user guide are subject to change without notice.
- Images not drawn to scale.

SPECIFICATIONS

Weight

Main unit:	68g (without battery)
Remote sensing unit:	46g (without battery)

Dimension

Main unit:	113(L) x 54(W) x 62(T) mm
Remote sensing unit:	96(L) x 50(W) x 28(T) mm

Main unit (indoor temp)

Operating range:	23°F to 122°F (-5°C to +50°C/23)
Resolution:	0.2°F (0.1°C)

Remote unit (outdoor temp)

Operating range:	-4°F TO 140°F (-20°C to +60°C)
Resolution:	0.2°F (0.1°C)

RF transmission frequency:	433 MHz
No. of remote unit:	1
RF transmission range:	100 feet (30 meters)
Temperature sensing cycle:	Approx. 39 seconds

Display: 12/24 hour, hh:mm

Date format: DD:mm

Languages: E, F, D, I, S

Alarm: 2-minute crescendo

Power

Main unit:	2 x UM-4 (AAA) 1.5V batteries
Remote sensor unit:	2 x UM-3 (AA) 1.5V batteries

NOTE For best results, use lithium ion batteries in the remote sensing unit if the outdoor temperature falls below 41°F (-5°C), other battery types will not function at such low temperatures.

ABOUT OREGON SCIENTIFIC

Visit our website (www.oregonscientific.com) to learn more about other Oregon Scientific™ products such as digital cameras, projection clocks, health and fitness gear, and weather stations. The website also includes contact information for our customer service department, in case you need to reach us.

NOTE ON COMPLIANCE

This device complies with Part 15 of the FCC Rules. Operation is subject to the following two conditions: (1) This device may not cause harmful interference, and (2) This device must accept any interference received, including interference that may cause undesired operations.

Warning: Changes or modifications to this unit not expressly approved by the party responsible for compliance could void the user's authority to operate the equipment.

FCC :

NOTE: This equipment has been tested and found to comply with the limits for a Class B digital device, pursuant to Part 15 of the FCC Rules. These limits are designed to provide reasonable protection against harmful interference in a residential installation. This equipment generates, uses and can radiate radio frequency energy and, if not installed and used in accordance with the instructions, may cause harmful interference to radio communications.

However, there is no guarantee that interference will not occur in a particular installation. If this equipment does cause harmful interference to radio or television reception, which can be determined by turning the equipment off and on, the user is encouraged to try to correct the interference by one or more of the following measures:

- Reorient or relocate the receiving antenna.
- Increase the separation between the equipment and receiver.
- Connect the equipment into an outlet on a circuit different from that to which the receiver is connected.
- Consult the dealer of an experienced radio/TV technician for help.



N

Company Name: Oregon Scientific, Inc.

Address: 19861 SW 95th Place, Tualatin, Oregon 97062,
USA

Website address: www.oregonscientific.com.

Name and model number of the product: Remote
Thermometer RAR232

NOTE Changes or modifications not expressly approved
by Oregon Scientific for compliance could void the warranty
and your authority to use this equipment.



CE



